

Ref. No - DAV/PS/CRRC/Gaya/2023-24/262

Date . 05-08-23

**D.A.V. PUBLIC SCHOOL,
CRRC, MEDICAL ROAD, GAYA**

A SR. SECONDARY ENGLISH MEDIUM Co-EDUCATIONAL SCHOOL

(Affiliated To Central Board Of Secondary Education, Delhi, Affiliation No. - 330101, School No. 65098)
Ph. No. 0631-2999194 (O), 7909005636 (O), E-mail : davcrregaya@gmail.com, Website : www.davcrregaya.org.in

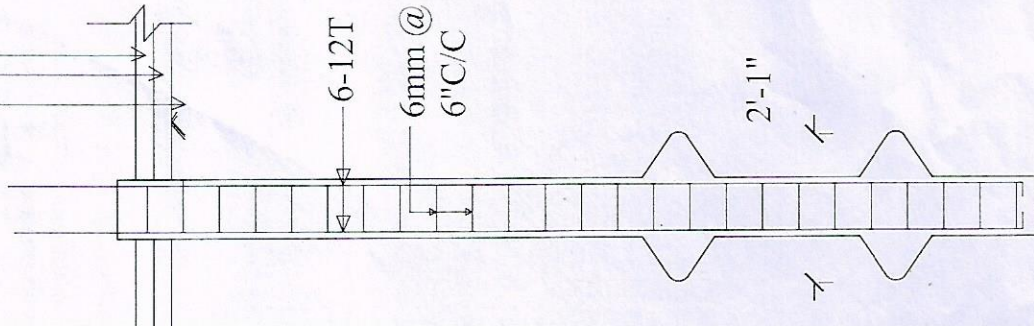
डी. ए. वी. पब्लिक स्कूल, सीआर,आरसी , मेडिकल रोड, गया विद्यालय में यज्ञशाला निर्माण करने हेतु प्रामाणिक व्यक्ति संस्था से कोटेशन / टेंडर एक सप्ताह के अंदर आमंत्रित करता है । विशेष जानकारी के लिए मोबाइल न :- 7909005636, 0631-2999194 एवं स्कूल वेबसाइट www.davcrregaya.org.in पर सम्पर्क करें।



प्रबंधक

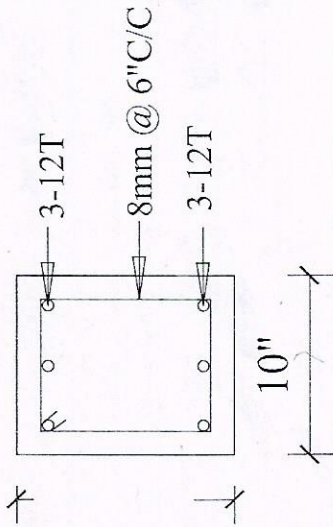
डी. ए. वी. पब्लिक स्कूल, सीआर,आरसी , मेडिकल रोड, गया

CK SOLING
AND FILLING
FACT EARTH

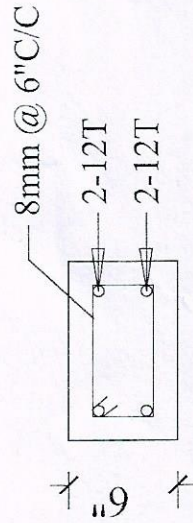


10"

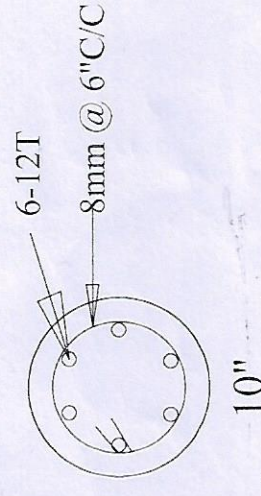
LE DETAILS
"DIA.)



G.B. (10"X12")



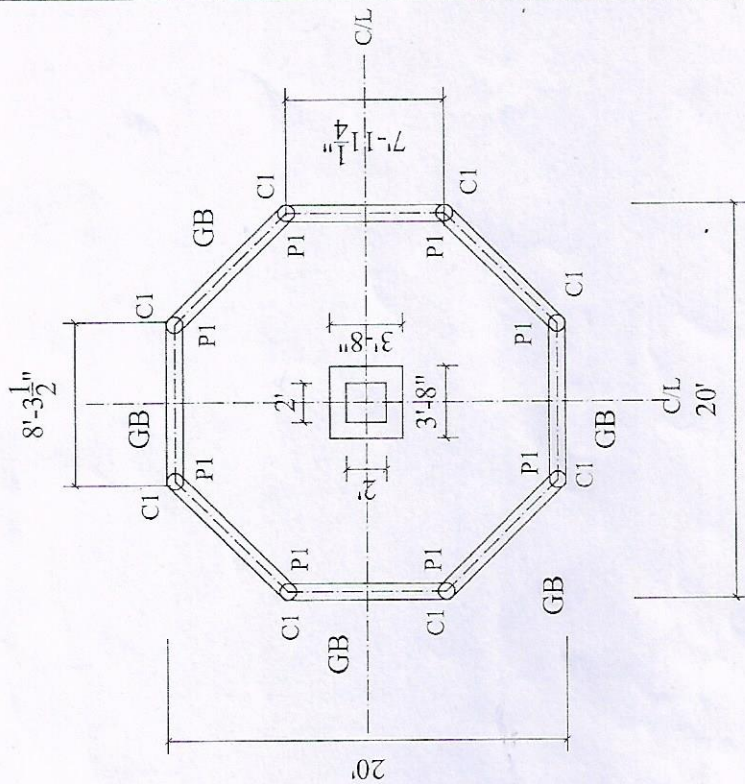
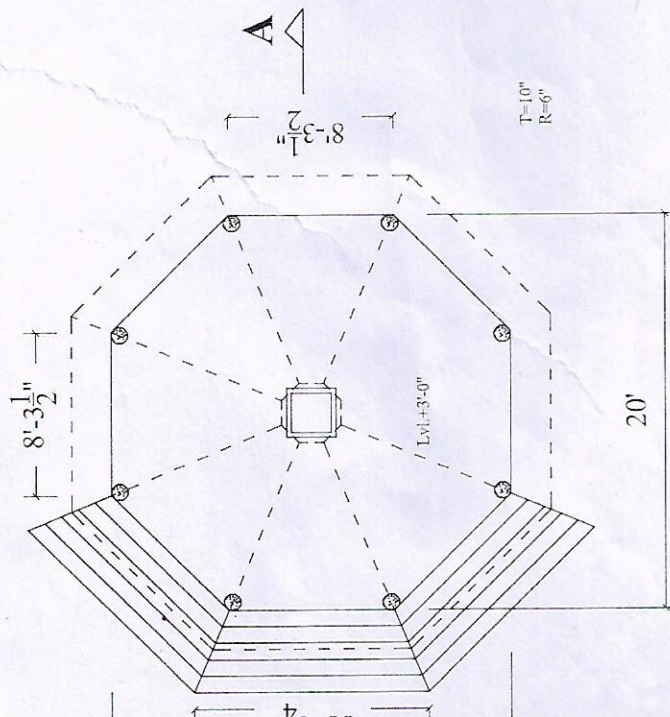
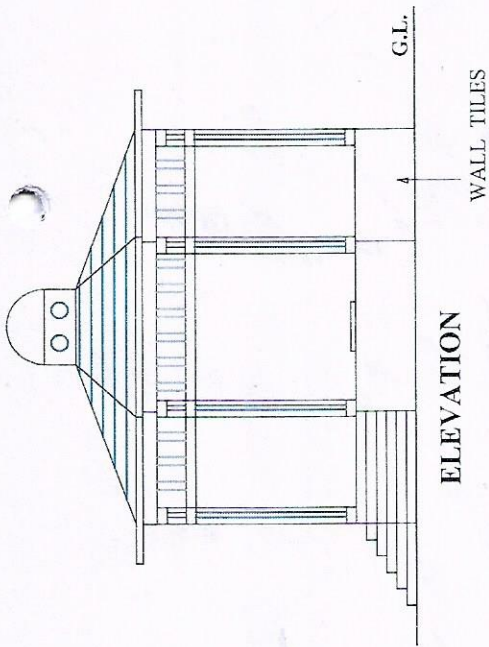
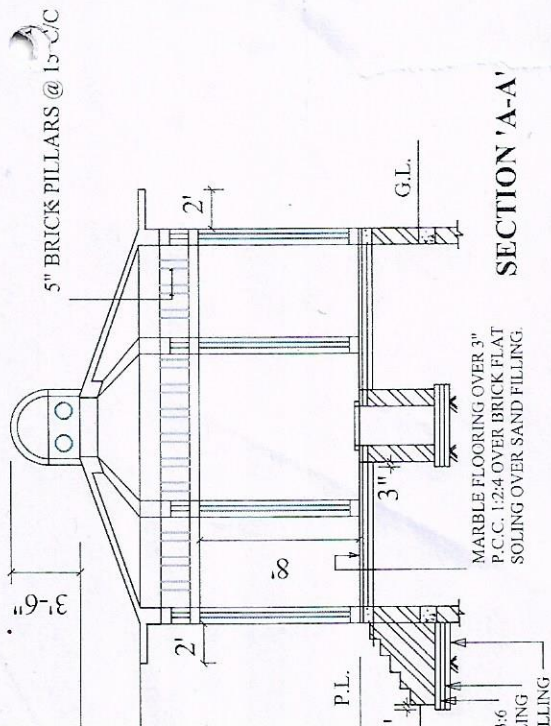
P.B. (10"X6")



C1 (10" DIA.)

COLUMN DETAIL

S.NO.	DATE	REVISIONS	DATE
DRG NO-02			JULY-23
TITLE PILE DETAILS			
PROJECT PROPOSED YAZSHALA AT D.A.V. PUBLIC SCHOOL, ROTARY CAMPUS, AHEAD OF MEDICAL COLLEGE, GAYA, BIHAR.			
archgroup architects, engineers, interior designers, 507(A), GANGA-A, VASTU VIHAR, PH-6, AIIMS-1, NH-139, NAUBATPUR, ROAD, BHUSAULA DANAPUR, PATNA, PIN-801 505 Mob.-0073550029 0430001170			



GROUND FLOOR PLAN

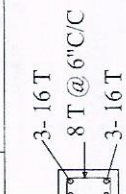
FLOOR AREA = 331.46 SFT.

LAYOUT PLAN

DRG NO -01	DATE JULY-23	archgroup architects, engineers, interior designers, 507(A), GANGA-A, VASTU VIHAR, PH-6, AIMS-1, NH-139, NAUBATPUR, ROAD, BHUSAULA DANAPUR, PATNA.
TITLE GROUND FLOOR PLAN, ELEVATION, SECTION 'A-A' IN PLAN		

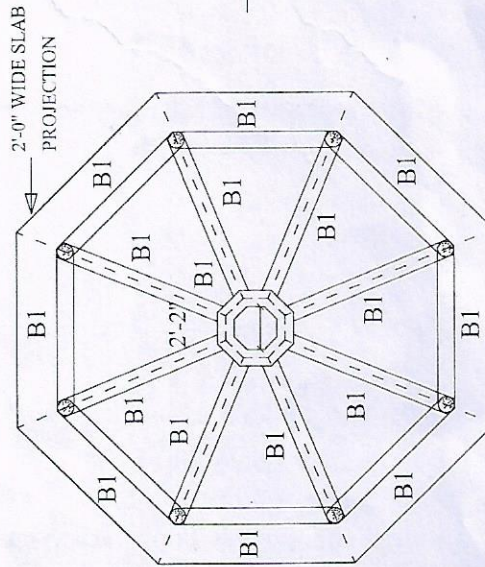
SED YAZSHALA AT D.A.V. PUBLIC SCHOOL,
Y CAMPUS, AHEAD OF MEDICAL COLLEGE,
BIHAR.

STEEL	RING
TOP= 3- 16 T BOTTOM= 3-16 T	8 T @ 6"C/C

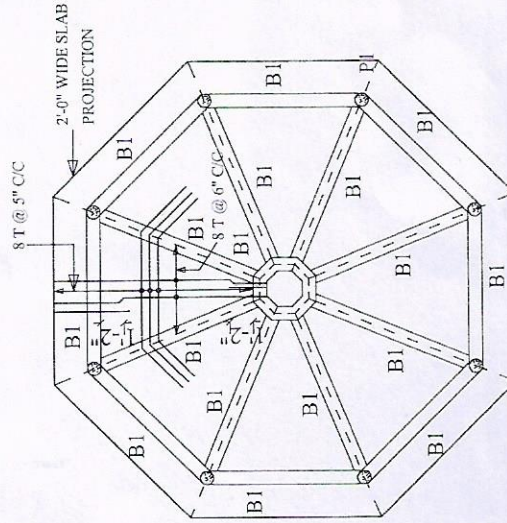


3-16 T
8 T @ 6"C/C
3-16 T
3" X 12"

SLAB THICKNESS = 4"



A

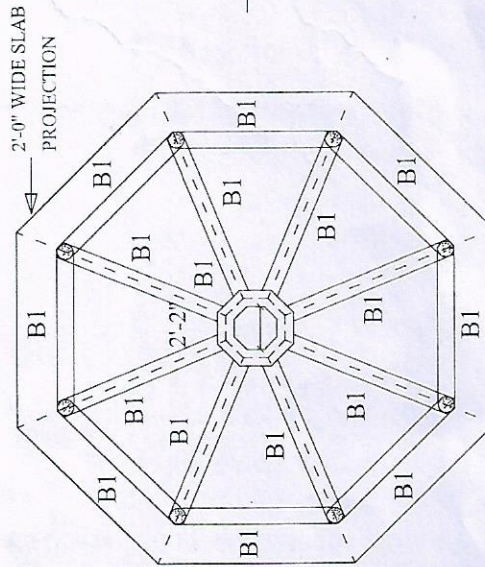


8 T @ 4" C/C
BOTH WAY

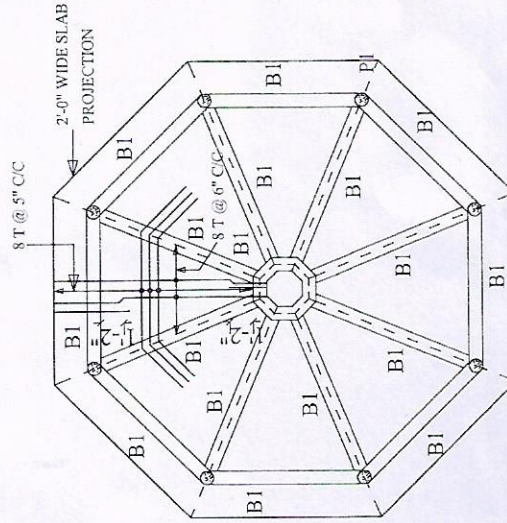
8 T @ 6" C/C

DOMES DETAILS

SLAB THICKNESS = 4"



A



8 T @ 4" C/C
BOTH WAY

8 T @ 6" C/C

DOMES DETAILS

SHUTTERING PLAN

G. FLOOR ROOF SLAB DETAILS

SLAB THICKNESS = 4"

DATE	archgroup
JULY-23	architects, engineers, interior designers, 507(A), GANGA-A VASTU VIHAR, PH-6, AIMS-1, NH-139, NAUBATPUR, ROAD, BHUSAULA DANAPUR, PATNA, PIN-801 505 Mch-9973550049 9430001170
TITLE	GROUND FLOOR SLAB & BEAM DETAILS

DESIGNED BY YASHALA AT D.A.V. PUBLIC SCHOOL,
Y CAMPUS, AHEAD OF MEDICAL COLLEGE,
BIHAR.

archgroup

architects , engineers,
interior designeres

507(A),GANGA-A,VASTI BHAR,PH-VI,AIIMS-1,NH-139,NAUBATPUR RD,BHUSAULA,PATNA-1505,BIHAR,Mob-94
REF:-DAV-RMG/SB/YS/01/23-24

Date:- 10 J

FOR TECHNICAL APPROVAL

ABSTRACT OF COST OF CONSTRUCTION OF YAZSHALA FOR D.A.V. PUBLIC SCHOOL, ROTARY CAMP			Qty.	Unit.	Rate
AHEAD OF MEDICAL COLLEGE, GAYA, BIHAR.					
Sl.No.	S.O.R.	DESCRIPTION			
		(A) YAZSHALA (GROUND FLOOR WITH FOUNDATION)			
		Cov.area of Ground Floor = 331.46 SFT(30.80 SM)			
		SECTION-I (PILING WORK)			
1	20.3A.1	Making 25 cm(10") dia bore upto 4 mtr. depth below ground with hand auger of approved quality in ordinary soil(Vide classification of soil item A) true to plumb and without eccentricity in any stage of operation and disposal of the excavated earth upto 50 mtr. lead including all lifts all complete as per approved design and direction of E/I.	29.27	Rm	17
2	20.3A.2	Making 63 cm.(25") dia under-ream at required with hand auger of approved quality in ordinary soil (vide clasification of soil item A)true to plumb and without eccentricity in any stage of operation and disposal of the excavated earth upto 50 mtr. lead including all lifts , all complete as per approved design and direction of E/I.	16	No.	1
		SECTION-II (EARTH WORK/SAND FILLING)			
3	2.8	Earth wok in excavation in foundation trenches or drains (not exceeding 1.5 M. in width or 10 sqm. on plan) including dressing of sides and ramming of bottoms, lift upto 1.5 M including getting out the excavated soil and disposal of surplus excavated soil as directed,within a lead of 50M.	6.31	Cum.	
	2.8.1	All kinds of soil.			
4	2.28	Supplying and filling in plinth with local sand and under floors including, watering, ramming, consolidating and dressing complete.	24.43	Cum.	
		SECTION-III (R.C.C. /P.C.C. WORK)			
5	4.1	Providing and laying in position cement concrete of specified grade excluding the cost of centring and shuttering- all work upto plinth level.			
	4.1.5	1:3:6 (1 cement: 3 coarse sand: 6 graded stone aggregate 20 mm nominal size.)	1.05	Cum.	
	4.1.3	1:2:4 (1 cement: 2 coarse sand: 4 graded stone aggregate 20 mm nominal size.)	2.35	Cum.	
6	5.1	Providing and laying in position specified grade of			

Sl.No.	S.O.R.	DESCRIPTION	Qty.	Unit.	
		reinforced cement concrete excluding the cost of centring, shuttering, finishing and reinforcement- All work upto plinth level.			
	5.1.2	1:1.5:3 (1 cement: 1.5 coarse sand: 3 graded stone aggregate 20 mm nominal size.)	4.79	Cum.	4
7	5.2.2	Reinforced cement concrete work in 1:1.5:3 (1 cement; 1.5 coarse sand; 3 graded stone aggregate 20mm nominal size) in wall (any thickness) including attach pilasters, buttresses, plinth and string courses, fillets, columns, pillars, piers, abutments, posts and struts etc. upto floor five level excluding cost of centering, shuttering finishing and reinforcement.	1.35	Cum	5
8	5.3	Reinforced cement concrete work in Beams, suspended floors, roofs, having slope upto 15 landings, balconies, shelves, chajjas, lintels, bands, plain window sills, stair cases and spiral stair cases upto floor five level excluding the cost of centering shuttering, finishing and reinforcement with 1:1.5:3 (1 cement; 1.5 coarse sand; 3 graded stone aggregate 20 mm nominal size)	8.34	Cum	5
9	5.9	Centering and shuttering including strutting propping etc and removal of form for			
	5.9.3	Suspended floors, roofs, landings balconies and access platform.	51.61	Sqm	
	5.9.5	Lintels, Beams, plinth beams, girders, bressumers and cantilevers.	65.10	Sqm	
	5.9.6	Columns, pillars, piers, abutments posts and struts.	21.31	Sqm	
	5.9.16	Edges of slabs and brakes in floors and walls.			
	5.9.16.1	Under 20 cm wide.	24.40	RM	
10	5.22	Reinforcement for R.C.C. work including straightening, cutting, bending, placing in position and binding all complete.			
	5.22.1	Mild steel 6mm dia.	140	Kg	
	5.22.7A	Thermo-Mechanically treated bars TMTC-500-8mm.	620	Kg	
	5.22.7C	Thermo-Mechanically treated bars TMTC 500-12mm	700	Kg	
	5.22.7D	Thermo-Mechanically treated bars TMTCFe-500-16mm.	590	Kg	
		SECTION - IV (MASONRY WORK)			
11	6.1A	Brick work with bricks of class designation 100A in foundation and plinth in:			
	6.1.14A	Cement mortar 1:6 (1 cement; 6 coarse sand)	11.20	Cum	
12	6.18A+	Half brick masonry with bricks of class designation 100A in super structure above plinth level upto floor V level.			
	6.18.4A	Cement mortar 1:4 (1 cement; 4 coarse sand)	9.00	Sqm	

Sl.No.	S.O.R.	DESCRIPTION	Qty.	Unit.	R
		SECTION - V (FLOORING WORK)			
13	11.23	Marble stone flooring with 18mm thick marble stone (sample of marble shall be approved by engineer in charge) over 20mm thick bases of cement mortar 1:4(1 cement, 4 coarse sand) laid and jointed with grey cement slurry including rubbing and polishing complete with.			
	11.23.2	Rajnagar plain white marble 18mm thick above 0.10 sqm up to 0.20 sqm.	42.38	Sqm	1
14	11.36	Providing and fixing first quality ceramic glazed wall tiles confirming to IS 15622(Thickness to be specified by manufacturer) of approved make in all colours, shades except burgundy, bottle green, black of any size as approved by engineer in charge in skirting, risers of steps and dados over 12mm thick bed of cement mortar 1:3 (1 cement, 3 coarse sand) and jointed with grey cement slurry @ 3.3 Kg/sqm including pointing in white cement mixed with pigment of matching shade complete.	12.81	Sqm	
15	11.22	Tile work In skirting,risers of steps and dado (upto 2M height) over 12mm thick bed of cement mortar 1:3 (1 cement,3 coarse sand) and jointed with grey cement slurry @ 3.3 Kg/sqm including pointing in white cement mixed with pigment of matching shade complete.			
	11.22.1	Marble tiles (Polished) Rajnagar 8mm thick.	8.36	Sqm	1
16	11.72	Providing designation 100A one brick flat soling joints filled with local sand including cost of watering, taxes, royalty all complete as per building specification ad direction of E/I.	45.30	Sqm	
		SECTION-VI (PLASTER WORK)			
17	13.11	12 mm cement plaster of mix:			
	13.11.4	1:6 (1 cement; 6 coarse sand).	34.13	Sqm	
18	13.12	15 mm cement plaster on rough side of single or half brick wall of mix			
	13.12.4	1:6 (1 cement; 6 coarse sand).	55.33	Sqm	
19	13.24	6 mm cement plaster to ceilling of mix			
	13.24.2	1:4 (1 cement; 4coarse sand).	61.47	Sqm	
		SECTION-VII (FINISHING WORK)			
20	13.78	Applying one coat of cement primer of approved brand and manufacture on wall surface:			
	13.78.1	Cement primer	95.60	Sqm	
21	13.92	Wall painting with plastic emulsion paint of approved brand and manufacture to give an even shade:			

Thanking You

Sl.No.	S.O.R.	DESCRIPTION	Qty.Yours	Unit
	13.92.1	Two or more coats on new work	95.60	Sqm
22	13.46A	Finishing walls with Premium Acrylic Smooth exterior paint with Silicone additives of required shade: Received		
	13.46A.1	New work (Two or more coat applied @ 1.43 ltr/10 sqm over and including priming coat of exterior	55.33	Sqm
		TOTAL		
		FOUNDING OFF		
		Cost of construction per S.Ft.		